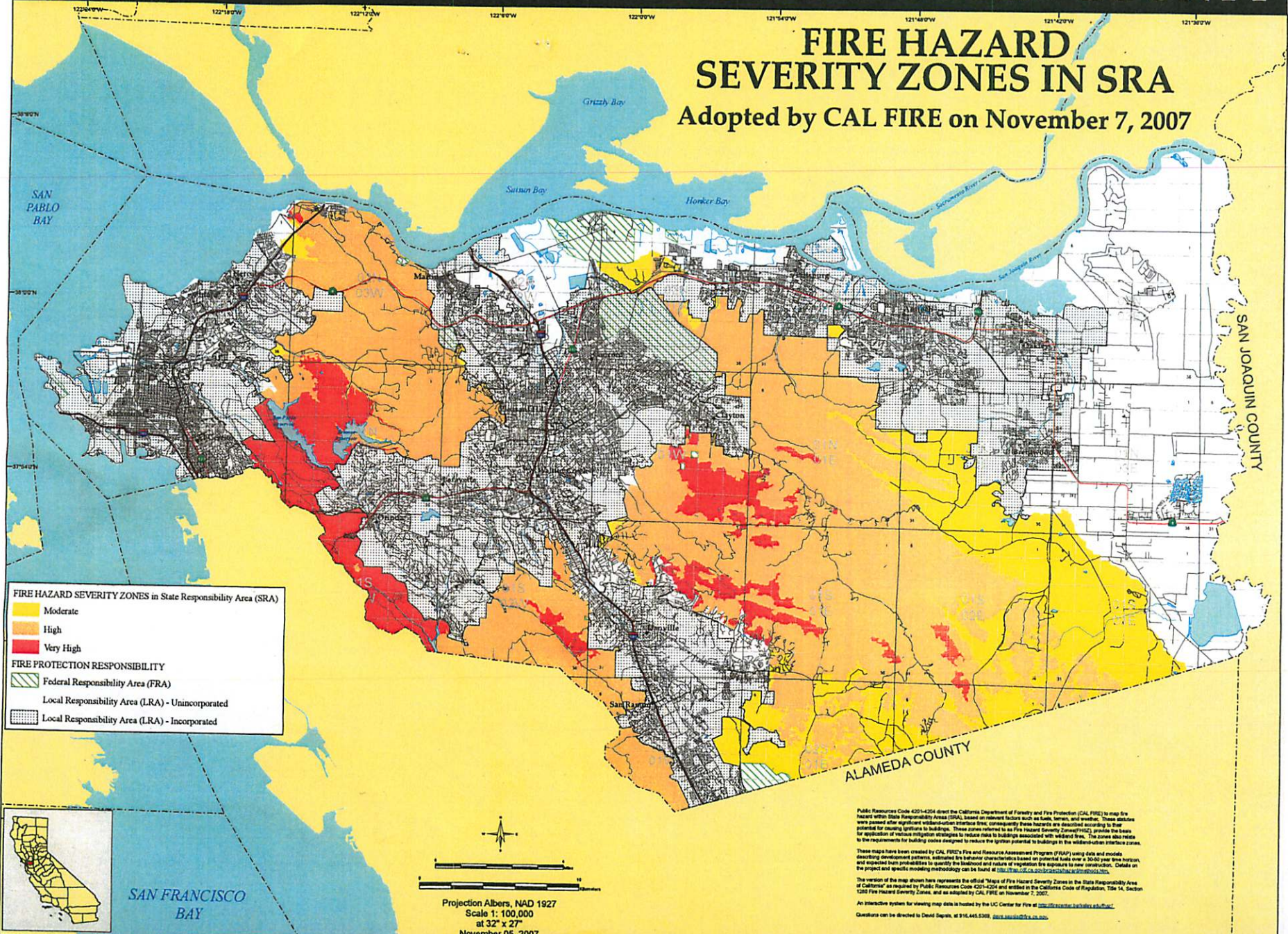


FIRE HAZARD SEVERITY ZONES IN SRA

Adopted by CAL FIRE on November 7, 2007



FIRE HAZARD SEVERITY ZONES in State Responsibility Area (SRA)

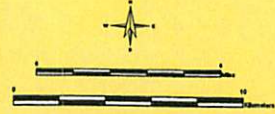
- Moderate
- High
- Very High

FIRE PROTECTION RESPONSIBILITY

- Federal Responsibility Area (FRA)
- Local Responsibility Area (LRA) - Unincorporated
- Local Responsibility Area (LRA) - Incorporated



SAN FRANCISCO BAY



Projection Albers, NAD 1927
Scale 1: 100,000
at 32" x 27"
November 05, 2007

Public Resources Code 4201-4204 direct the California Department of Forestry and Fire Protection (CAL FIRE) to map the hazard within State Responsibility Areas (SRAs), based on relevant factors such as fuels, terrain, and weather. These studies were prepared after significant wildfire-related interface fire, consequences from hazards are described according to their potential for causing ignition to buildings. These zones referred to as Fire Hazard Severity Zones (FHSZ), provide the basis for application of various mitigation strategies to reduce risks to buildings associated with wildfire fire. The zones also relate to the requirements for building codes designed to reduce the ignition potential to buildings in the wildland-urban interface zones.

These maps have been created by CAL FIRE's Fire and Resource Assessment Program (FRAP) using data and models describing development patterns, evaluated by behavior characteristics based on potential fuels over a 100-year time horizon, and expected burn probabilities to quantify the likelihood and nature of vegetation fire exposures to new construction. Details on the project and specific modeling methodology can be found at <http://www.fire.ca.gov/FRAP/FRAP2007>.

The version of the map shown here represents the official "Maps of Fire Hazard Severity Zones in the State Responsibility Area of California" as required by Public Resources Code 4201-4204 and entitled in the California Code of Regulations, Title 14, Section 12010 Fire Hazard Severity Zones, and as adopted by CAL FIRE on November 7, 2007.

An interactive system for viewing map data is hosted by the UC Center for Fire at <http://www.fire.ucdavis.edu/>.
Questions can be directed to David Dejeu, at 916.445.5309, ddejeu@ucdavis.edu.

The State of California and the Department of Forestry and Fire Protection make no representations or warranties regarding the accuracy of data or maps. Neither the State nor the Department shall be liable under any circumstances for any direct, special, incidental, or consequential damages with respect to any claim by any user or third party on account of, or arising from, the use of data or maps.

Obtain FRAP maps, data, metadata and publications on the Internet at <http://frap.cdf.ca.gov>
For more information, contact CAL FIRE-FRAP, PO Box 944246, Sacramento, CA 94244-2460, (916) 327-3939.

Arnold Schwarzenegger, Governor
State of California
Mike Christman, Secretary for Resources
The Resources Agency
Ruben Grijalva, Director
Department of Forestry and Fire Protection

MAP ID: FHSZ_MAP
DATA SOURCES
CAL FIRE Fire Hazard Severity Zones (FHSZ06_3)
CAL FIRE State Responsibility Areas (SRA05_5)
CAL FIRE Incorporated Cities (Incorp07_3)
PLGS (1:100,000 USGS, Land Grants with CAL FIRE grid)

